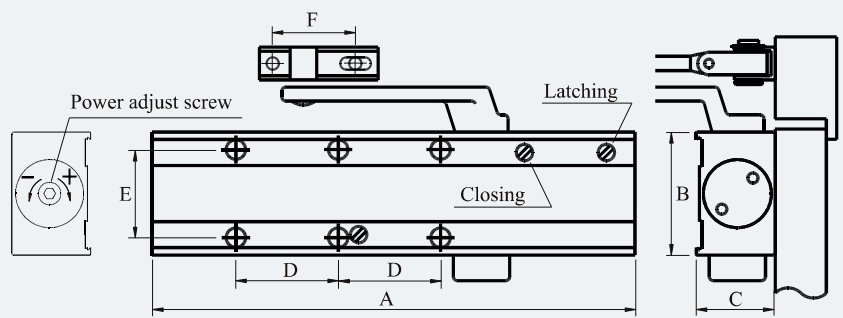


9025 SERIES	SIZE EN2~5
Fitted with standard arm	
Max. door width (mm)	850 - 1250
Max. door weight (kg)	40 - 100
Max. opening angle	180°



DIMENSIONS					
A	B	C	D	E	F
236	60	38.5	50	43	45



9025 Series

9025 Series surface mounted door closer is a high end unit offering multi-functional operation suitable for most common doors in architectural and commercial applications.

Standard Features

- Closing force power adjustable (EN2-5)
- A single closer provides variable power sizes
- Adjustable closing speed and latching speed
 - Closing speed action (180°~15°)
 - Latching speed action (15°~0°)
- Non-handed installation
- Compact extruded aluminium body design with minimal projection allowing installation to door with adjacent wall at 90°
- Back check - beyond approx 60° (valve adjustable)
- Delayed action - between 180° and 65°
- Parallel arm bracket supplied as standard

- Standard hold open arm - available as accessory
- Slide track (inc. hold open) - available as accessory
- Fixing screws supplied to suit timber or metal fixing
- Drop plate and inverted mount plate - available as accessories
- Stainless steel box cover - available as accessory

Fire Rating

9025 Series door closer has been successfully tested on fire door assemblies in accordance with Australian Standard AS1905 Part 1: Fire Resistant Door sets.



PRODUCT CODE	FINISH	DESCRIPTION
9025SIL	SIL	Door closer EN2-5 inc. standard arm and PA bracket - no box cover
9025CSSS	SSS	Door closer EN2-5 inc. standard arm and PA bracket plus box cover
9025CPSS	PSS	Door closer EN2-5 inc. standard arm and PA bracket plus box cover